

# Kenya to Kruger

## 33 days | Nairobi to Johannesburg



Enjoy a real African adventure, from Nairobi to Johannesburg. Check out some of Africa's greatest game parks, idle about on the tropical island of Zanzibar, relax on the shores of Lake Malawi and enjoy the rush at Victoria Falls.

### HIGHLIGHTS AND INCLUSIONS

#### Trip Highlights

- **Kenya** - begin your African adventure in the vibrant Kenya capital, and head out to explore independently
- **Tanzania** - spot all of Africa's Big Five as you explore the world famous game reserves of the Serengeti and UNESCO-listed Ngorongoro Crater
- **Zanzibar** - unwind on the pristine beaches, explore historic Stone Town and opt for a sunset dhow cruise or visit to a spice plantation
- **Malawi** - spend three days travelling along the western edge of Lake Malawi, which takes up one third of the country
- **Zambia** - spot iconic wildlife on safari in South Luangwa National Park and admire the Zambian side of the thundering Victoria Falls in Livingstone
- **Botswana** - camp out in Chobe National Park, cruise on the Chobe River and

explore the Okavango Delta aboard mokoro canoes

- **Zimbabwe** - marvel at the impressive Victoria Falls from the Zimbabwean side and join optional activities including bungee jumping and rafting on the Zambezi
- **South Africa** - enjoy amazing views of the Blyde River Canyon, search for lions, elephants and more in Kruger National Park, and finish your journey in Johannesburg

#### What's Included

- Arrival transfer from Nairobi Airport on day 1
- 1st night dormitory accommodation at Kenya Comfort Hotel and 28 nights camping. Tents and sleeping mats provided
- A fully equipped overland truck for transportation and game drives
- Services of 3 person crew (leader, driver, cook)
- All camping fees and appropriate equipment
- 27 breakfasts, 25 lunches and 25 dinners
- 3 night Zanzibar Excursion including ferry transfer, accommodation, Spice Tour and Dhow Sunset Cruise
- Park entry and game drive in Chobe NP, Ngorongoro NP, Serengeti NP, South Luangwa and Kruger NP
- All road taxes and tolls

- Chobe River Boat Cruise

#### What's Not Included

- International flights and visas
- Sleeping bag - please bring your own
- Tipping - an entirely personal gesture
- Optional activities

#### Local Payment

\$2090pp, paid in USD

The local payment is a cost per person which needs to be paid in US Dollars cash only. It is this payment which in part covers the park fees and other inclusions such as meals as detailed under 'what you get'. The local payment also covers your arrival transfer and 1st night's accommodation. Please note that due to exchange rate fluctuations in the US dollar, the local payment amount may be subject to changes. This payment will be collected by your tour leader at the Welcome Meeting on day 1.

### ITINERARY

#### Day 1 : Nairobi

Saturday. Welcome to Nairobi! We'll be there to collect you at Nairobi Airport and transfer you to the Kenya Comfort Hotel. Tonight you will stay in shared dorms. There will be a pre departure meeting at 17.00. **Overnight - Nairobi**

### Kenya to Kruger - 33 days

www.onthegotours.com  
 UK 020 7371 1113 info@onthegotours.com  
 AUS 1300 855 684 aus-info@onthegotours.com  
 NZ 0800 44 77 69 CAN 1 866 890 7038  
 USA 1 866 606 2960 SA 0800 990 311

This information has been compiled with care and good faith. They give an accurate illustration of the proposed arrangements for this holiday. Circumstances beyond our control such as changes in local conditions, inclement weather or other reasons could force us to make changes to this itinerary. Any costs shown are subject to change, though are an accurate reflection of costs at time of writing. Please also note that visa requirements are subject to change and are the responsibility of the traveller and not that of On The Go Tours.

# Kenya to Kruger

## Days 2-5 : Serengeti & Ngorongoro



Nairobi - Arusha (Tanzania). Leaving Nairobi, we cross the border into Tanzania. Arusha is the starting point for the 3 day excursion to Ngorongoro Crater and the Serengeti. For those not opting to visit the Ngorongoro Crater or Serengeti National Park, the next 3 days are spent at leisure enjoying the Meserani reptile park, Masai Cultural Museum and the surrounding villages and craft markets. Alternatively the town of Arusha is close by to explore.

The Ngorongoro/Serengeti excursion takes us via the Masai town of Mtu Wa Mbu (Mosquito River) that lies adjacent to the Lake Manyara National Park and up the Rift Valley Escarpment to the higher lying village of Karatu. Karatu offers magnificent views over the surrounding hills and has many well established wheat farms that add to the picturesque panoramas. We spend the evening at a pleasant campsite in Karatu. On the morning of day 4 we depart early for the Ngorongoro Conservation area and head into the wildlife rich Ngorongoro Crater. This World Heritage Site boasts some of the best game viewing in Africa – including the elusive Black Rhino.

After our game drive in the Crater, we continue down the Crater rim and past the 'Cradle of Mankind' on our way to the Serengeti National Park. We cross the vast plains as we game drive through the southern and central areas in the park. Tonight we bush camp (no ablutions) in the wild surrounded by the sounds of the African wilderness. On day 5 we head off for another game drive and explore the landscape in search of the resident wildlife. With some luck, we may see some of Africa's 'Big 5'! We then return to

Arusha for the night. **Overnight - Arusha (1), Karatu (1), Serengeti (1), Arusha (1)** (B:3, L:4, D:4)

## Day 6 : Pangani

Arusha - Pangani. We return to Arusha before continuing on towards Dar es Salaam. On the way we drive through the town of Moshi situated at the magnificent Mount Kilimanjaro – Africa's highest mountain. We may even catch a glimpse of this magical mountain's snowy summit - a photo opportunity not to be missed! **Overnight - Pangani** (B, L, D)

## Day 7 : Dar es Salaam

Pangani - Dar es Salaam. After our night in Pangani midway between Arusha and Dar es Salaam we continue on to Dar es Salaam. Travelling through lush scenery and palm trees, we near the warm Indian Ocean. Look out for the colourful shop-fronts with their sometimes humorous 'catch phrases'. On arrival in Dar es Salaam we make our way to our lovely seaside campsite and prepare for our departure to Zanzibar the next morning. **Overnight - Dar es Salaam** (B, L, D)

## Days 8-10 : Zanzibar



Dar es Salaam - Zanzibar. A ferry from Dar Es Salaam takes us to 'Spice Island', where we spend the next three nights. Zanzibar is steeped in history and offers a wealth of experiences. Wander the streets of Stone Town, take an excursion around a spice plantation or simply laze on one of the pristine white sandy beaches, the choice is yours!

**Overnight - Zanzibar** (B:1)

## Day 11 : Mikumi

Zanzibar - Mikumi. Leaving Zanzibar in the morning, we return to the mainland and head west, passing through the Mikumi National Park where it is possible to view a range of

wildlife from the roadside, totally impervious to the passing traffic. We will stop in the town of Mikumi for our overnight stay. Arrival to camp is usually in the late afternoon, or early evening. **Overnight - Mikumi** (D)

## Day 12 : Iringa

Mikumi - Iringa. Departing early this morning we continue towards Iringa where we spend the night in a beautiful rustic campsite famous for its Amarula Hot Chocolates and its steamy showers! Be sure to keep a good book, music and a pack of cards handy as we are covering around 200 km's today.

**Overnight - Iringa** (B, L, D)

## Days 13-15 : Lake Malawi

Iringa - Lake Malawi (Malawi). Winding our way through the beauty of the Tukuyu tea and banana plantations, we travel into Malawi, a landlocked country with 20% of its total area made up of beautiful Lake Malawi. We travel the length of the western side of the lake, stopping off at various bays and inlets over the next 3 days. Spend the days learning the game of bao from the locals, scour the markets for a bargain or simply relax on the pristine beaches. **Overnight - Lake Malawi** (B:3, L:3, D:3)

## Days 16-18 : South Luangwa National Park

South Luangwa - Lusaka Area. On day 16 we cross the border into Zambia before heading towards South Luangwa National Park. This breath taking park is situated on the Luangwa River in the Eastern part of Zambia, and it is the southernmost of three national parks in this region. South Luangwa was founded in 1938 as a game reserve, 1972 was the year it was declared as a national park, and today it covers over 9000 kilometres squared. Animals such as Giraffe, buffalo and Elephants can be found in abundance. The Luangwa river is home to many a hippo and croc.

Leaving the park on day 18 we make our way down south. As we drive, we pass through a few of the villages and towns of Zambia along the way. Prosperous during the copper boom in the 60's, Zambia was able to build infrastructure at the main mining

## Kenya to Kruger - 33 days

www.onthegotours.com  
 UK 020 7371 1113 info@onthegotours.com  
 AUS 1300 855 684 aus-info@onthegotours.com  
 NZ 0800 44 77 69 CAN 1 866 890 7038  
 USA 1 866 606 2960 SA 0800 990 311

updated on 25-09-2020 12:38:53

This information has been compiled with care and good faith. They give an accurate illustration of the proposed arrangements for this holiday. Circumstances beyond our control such as changes in local conditions, inclement weather or other reasons could force us to make changes to this itinerary. Any costs shown are subject to change, though are an accurate reflection of costs at time of writing. Please also note that visa requirements are subject to change and are the responsibility of the traveller and not that of On The Go Tours.

# Kenya to Kruger

and farming communities. After the fall of the copper industry, the country was left virtually bankrupt and existing infrastructure was left to fall to ruin. Due to foreign investment and a rise in the mining industry, Zambia is today once again starting to prosper. **Overnight - South Luangwa National Park (2) Lusaka Area (1)** (B:3, L:3, D:3)

## Day 19 : Livingstone

Lusaka Area - Livingstone. Heading further south, we journey through the southern Zambian towns mostly supporting local agriculture and farming on our way to Livingstone. The Victoria Falls or Mosi-oa-Tunya (the Smoke that Thunders) is one of the Seven Natural Wonders of the World and it's not difficult to see why. At 1700 m wide and around 100 m high, this is the world's largest sheet of falling water and a memorable sight on any African Safari! The Falls can be viewed from the Mosi-oa-Tunya National Park, Zambia - a fantastic photo opportunity. Tonight we have the option of enjoying a sunset dinner cruise on the mighty Zambezi. **Overnight - Livingstone** (B, L, D)

## Day 20 : Chobe National Park



Livingstone - Kasane (Botswana) - Chobe. Today we cross the border into Botswana and continue to the town of Kasane, on the banks of the Chobe River which forms a border between Zambia, Namibia and Botswana.

Tonight we enjoy an exciting overnight experience in the wilds of the Chobe National park. Chobe is one of Botswana's premier game parks, renowned for its large elephant herds. Spend the afternoon in search of wildlife while we game drive to our camp within the park where we spend the evening surrounded by the night-time noises of the

local wildlife. **Overnight - Chobe National Park** (B, L, D)

## Day 21 : Victoria Falls

Chobe - Victoria Falls (Zimbabwe). After our night in the bush, we head out early to continue our search for wildlife, before packing up the camp and heading back to Kasane. Crossing the border into Zimbabwe, a short drive takes us to the nearby Victoria Falls. Named after the famous World Heritage site and Water Falls, the town of Victoria Falls is situated on the Zambezi River and surrounded by the Victoria Falls National Park. We enjoy our last day in the adrenaline playground of Africa, where there are optional activities aplenty here including Zambezi white water rafting, bungee jumping from 111m and flights over the Falls in a variety of airborne machines! **Overnight - Victoria Falls** (L)

## Days 22-23 : Victoria Falls



The next 2 days are spent relaxing or participating in a myriad of optional excursions. Optional excursions include horseback safaris, a visit to the crocodile ranch, boat cruises and golf at The Elephant Hills Resort. Adrenalin junkies can bungee from the Victoria Falls Bridge connecting Zimbabwe and Zambia or abseil down the Batoka Gorge - neither activity is for the faint hearted! All year round, flights in fixed wing, micro light and ultra light aircraft or helicopters provide an incredible aerial view of the falls and white water rafting on the Zambezi is world class! **Overnight - Victoria Falls** (B:2)

## Day 24 : Chobe River Cruise

Victoria Falls - Kasane (Botswana). After breakfast we cross the border into Botswana and head back to Kasane where we set up camp on the banks of the Chobe River.

This afternoon we have the option to take a boat cruise along the beautiful Chobe River. Elephant, hippo and many bird species can be viewed from the boat while we watch another glorious African sunset.

**Overnight - Kasane** (B, L, D)

## Day 25 : Maun

Kasane - Nata Region. We leave this beautiful part of Botswana behind us this morning as we depart to the lush campsite called Elephant Sands. The drive will take you through a very unpopulated landscape where the donkeys roam freely. Once we have arrived at our campsite you will have the option of partaking in a game drive or a bushwalk. Your crew will provide you with more information. **Overnight - Nata Region** (B, L, D)

## Days 26-27 : Okavango Delta



Nata Region - Maun - Okavango Delta. Maun is the starting point for our trip into the Delta and it is from here that we can set off to explore the Okavango Delta. Tonight we prepare our provisions and packs for our overnight excursion. We suggest bringing along a smaller daypack on your trip which can be used to pack the supplies needed for this short excursion. Your trip leader will brief you fully on what is needed, and what to expect prior to your trip into the Delta.

After an early rise on day 27 we pack our expedition vehicle and from Maun we drive north for a couple of hours to reach the mokoro peler's station. The Delta region is studded with many local villages where many families live in a traditional way. Some of the villages are very remote and can only be reached by the traditional mode of transport - the Mokoro. Mokoros are dugout canoes manoeuvred through the waterways by local guides who "pole" them through the reeds.

## Kenya to Kruger - 33 days

www.onthegotours.com  
 UK 020 7371 1113 info@onthegotours.com  
 AUS 1300 855 684 aus-info@onthegotours.com  
 NZ 0800 44 77 69 CAN 1 866 890 7038  
 USA 1 866 606 2960 SA 0800 990 311

This information has been compiled with care and good faith. They give an accurate illustration of the proposed arrangements for this holiday. Circumstances beyond our control such as changes in local conditions, inclement weather or other reasons could force us to make changes to this itinerary. Any costs shown are subject to change, though are an accurate reflection of costs at time of writing. Please also note that visa requirements are subject to change and are the responsibility of the traveller and not that of On The Go Tours.



# Kenya to Kruger

At the Mokoro station, we meet our 'Polers' and pack our supplies before heading out into the waterways. After a couple of hours along the waterways, we arrive at our mobile tented camp situated in the heart of the Okavango.

On arrival you will meet the local staff who will be your host during your stay. A brief introduction to the camp will show you your dome tent with twin beds and a bush ensuite bathroom – long drop toilet and a bucket shower. Relax in the tent with a cold drink or take a paddle in the Delta in a canoe. The activities at the camp include Mokoro trails and guided walking. **Overnight - Okavango Delta** (B:2, L:2, D:2)

## Day 28 : Maun

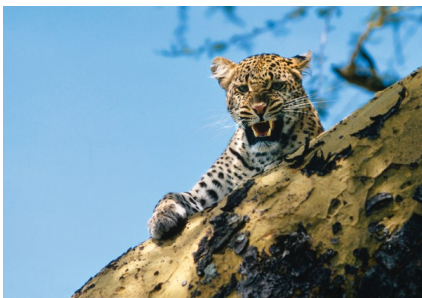
Okavango Delta - Maun. This morning we pack up and set off back to Maun. After our Mokoro ride and vehicle transfer, we arrive at Maun in the afternoon and there's time to complete our Okavango experience by taking an optional scenic flight over the Delta (dependent on weather conditions & availability). **Overnight - Maun** (B, L, D)

## Day 29 : Palapye

Maun - Palapye. Heading out early, we have a fairly long (450kms) drive today to the small town of Palapye, situated about halfway between Francistown and Gaborone (Botswana's capital). This popular 'stopover' town for those en route to South Africa, is well known for the Morupule Colliery coal mines which supplies Morupule Power Station, Botswana's principal domestic source of electricity.

**Overnight - Palapye** (B, L, D)

## Day 30 : Blyde River Canyon



Palapye - Polokwane (South Africa). This morning we cross into South Africa, and

sightsee at the impressive Blyde River Canyon. Named for the Blyde River that runs through it, the canyon is 26km long, and averages 800m deep and forms the northern edge of the impressive Drakensberg Mountain Range. It is classified as a 'green canyon' due to the uncommon occurrence of vegetation that lines it (uncommon as most canyons are in desert areas and are fairly barren). The main viewpoints along the canyon are the 3 Rondavels, named for the shape of the traditional huts or houses the indigenous people of the area used to live in; and Gods Window that affords a breathtaking view across the canyon and surrounding area.

**Overnight - Polokwane** (B, L, D)

## Days 31-32 : Kruger National Park

Polokwane - Hazyview. Heading through the breathtaking Panorama Route, we stop off at various viewpoints today including scenic God's Window. We pass through the small town of Graskop, and head toward the Kruger National Park and our campsite in the park. Situated just 10km from Kruger's Phabeni Gate, the camp is home to Giraffe, Zebra and Hippo to name but a few.

The next day we visit the amazing Kruger National Park in search of some of the 146 mammals, 500 bird, 114 reptile, 33 amphibian & 49 fish species that make this park their home. We travel in our truck along the main game viewing routes within the park and stop off at some of the camps along the way. For those who wish to upgrade to an open vehicle game drive, this can be arranged with the trip leader at an additional cost. **Overnight - Hazyview** (B:2, L:2, D:2)

## Day 33 : Johannesburg

Wednesday. Hazyview - Johannesburg. After breakfast, we begin our journey to Johannesburg, our final destination. On arrival in Kempton Park Johannesburg we unload the truck for the final time, exchange addresses and part ways, having just experienced a trip of a lifetime!

We suggest you extend your stay by a few days to partake in some of the activities available in Johannesburg. Post

tour accommodation can be booked locally, please speak to your tour leader for more information. (B)

## HOTELS

Highlighted below are some of the hotels which we frequently use on this tour, though we reserve the right to substitute these hotels to ones of a similar standard.

**Please refer to your Tour Voucher for your confirmed arrival hotel and further arrival information.**

### Kenya Comfort Hotel

Comfortable dormitory accommodation in central Nairobi (upgrades available on request). The Kenya Comfort Hotel also features an outdoor pool, restaurant serving a good array of local and international dishes as well as a fully stocked bar - perfect for relaxing before or after your epic overland adventure.



### Kipepeo Village

The Tanzanian bush meets the blue waters of the Indian Ocean at Kipepeo Beach & Village, situated on the south coast of Dar Es Salaam. The campsite is right on the beach itself and is a popular destination for watersports adventures or simple relaxation. Facilities include a beach bar and restaurant. Upgrades are available to the twenty elevated ensuite chalets, built in the bush and decorated in traditional Swahili style, provide a stunning ocean views.



### Croc Valley Camp

## Kenya to Kruger - 33 days

www.onthegotours.com  
 UK 020 7371 1113 info@onthegotours.com  
 AUS 1300 855 684 aus-info@onthegotours.com  
 NZ 0800 44 77 69 CAN 1 866 890 7038  
 USA 1 866 606 2960 SA 0800 990 311

This information has been compiled with care and good faith. They give an accurate illustration of the proposed arrangements for this holiday. Circumstances beyond our control such as changes in local conditions, inclement weather or other reasons could force us to make changes to this itinerary. Any costs shown are subject to change, though are an accurate reflection of costs at time of writing. Please also note that visa requirements are subject to change and are the responsibility of the traveller and not that of On The Go Tours.

## Kenya to Kruger

Croc Valley Camp is located on the banks of the Luangwa River, and provides accommodation ranging from riverfront tents to ensuite chalets, built on stilts to avoid the off-season floods. Watch elephants roam across the campsite, experience a game drive through South Luangwa National Park, or relax with a gin & tonic at the bar. The camp also features a large outdoor pool, kitchen facilities, and daily laundry service.



### Shearwater Explorers Village

Situated in the bohemian town of Victoria Falls, and 400m from the Falls themselves, the affordable accommodation at the Shearwater Explorers Village consists of 5 campsites with modern bathroom facilities, and 16 chalets with en-suite showers and A/C. Shearwater operates a range of activities at the Falls, from bungee jumping to river rafting - and when the day is over, guests can wind down with Wi-Fi in the lounge areas, a drink by the pool, or even a back rub in the massage tent.



### Delta Rain Bushcamp

This unique campsite is located in the heart of the Okavango Delta, as part of the Delta Rain safari experience. Accommodation consists of dome tents with twin beds, and "bush en-suite" bathrooms with a long-drop toilet and bucket shower. After settling in, guests can relax in the mess tent, partake in game viewing trips, or go on guided walks, while admiring the beauty of this UNESCO World Heritage Site.



#### PRICES / DATES INFO

Departure dates noted with a 'G' are guaranteed to operate. All other departure dates are guaranteed with a minimum of 4 persons. Prices shown above are per person travelling. Single travellers will be placed in their own tents.

#### PRICES / DATES 2021

Date	Twin Share	Single
13 Feb	USD 2,741	USD 5,225
13 Mar	USD 2,741	USD 5,225
10 Apr	USD 2,741	USD 5,225
08 May	USD 2,741	USD 5,225
05 Jun	USD 2,741	USD 5,225
03 Jul	USD 2,916	USD 5,400
31 Jul	USD 2,916	USD 5,400
28 Aug	USD 2,916	USD 5,400
25 Sep	USD 2,741	USD 5,225
23 Oct	USD 2,741	USD 5,225
20 Nov	USD 2,741	USD 5,225
18 Dec	USD 2,916	USD 5,400

#### PRICES / DATES 2022

Date	Twin Share	Single
29 Jan	USD 2,484	USD 2,484
26 Feb	USD 2,741	USD 5,225
26 Mar	USD 2,741	USD 5,225
23 Apr	USD 2,741	USD 5,225
21 May	USD 2,741	USD 5,225
18 Jun	USD 2,741	USD 5,225
16 Jul	USD 2,916	USD 5,400

### Kenya to Kruger - 33 days

www.onthegotours.com  
 UK 020 7371 1113 info@onthegotours.com  
 AUS 1300 855 684 aus-info@onthegotours.com  
 NZ 0800 44 77 69 CAN 1 866 890 7038  
 USA 1 866 606 2960 SA 0800 990 311

updated on 25-09-2020 12:38:53

This information has been compiled with care and good faith. They give an accurate illustration of the proposed arrangements for this holiday. Circumstances beyond our control such as changes in local conditions, inclement weather or other reasons could force us to make changes to this itinerary. Any costs shown are subject to change, though are an accurate reflection of costs at time of writing. Please also note that visa requirements are subject to change and are the responsibility of the traveller and not that of On The Go Tours.